



## MP Commander

Manages, Pilot, and secures daily use of Multicom Pocket ISDN/Ethernet routers from Lightning.

## User's Manual

---

For MacOS PPC or  
PC (Win9x, NT4).

(Table of Contents : page 2)

Version Beta

[www.nelixa.com/registerware](http://www.nelixa.com/registerware)

Draft

## Table of Contents :

MacOs versus Win32	4
Getting Started...	5
Preferences	6
MP Commander's console	7
Online Help	8
Menus	9
Diagnosis (option)	10
Optional Features	11
Applescript (Only for MacOs)	12
QuickTime and Cu-SeeMe	14
Tips and tricks	15
Folder and files	16
History and about	17

## Using the registerware - freeware MP Commander.

These software are provided «as is» for testing and evaluation purposes only. NelixA and the Authors. makes no warranties either expressed or implied, concerning the software. Accordingly, this beta software should not be used for deadline critical projects.....

### **Extracts from the General User Conditions of Software or Derived Software:**

#### Article 4 - PRODUCT OWNERSHIP RIGHTS.

The product manufactured by NélixA as well as any form of partial or total reproduction, translations, adaptations, compilations or product parts are the exclusive property of NélixA, as stated by the law dated 11th March 1957 and in the subsequent modifications in the law passed on 3rd July 1985, in particular Article 45 and thereafter.

It is stated in the said article that «any reproduction other than that of a back-up copy by the user and any use of a software programme unauthorised by the author or other copyright holders will be subject to sanctions provided by the law». Thus, it follows that the product produced by NélixA is neither transferable or transmissible by the user whether it be free of charge or in return for payment.

#### Article 5 - PRODUCT PROTECTION.

\* The product is protected by the provisions laid down by the afore-mentioned law dated 11th March 1957. The user undertakes to divulge the contents of the said product or of the user manual only to his officials and to those people specially appointed by NélixA.

The client guarantees the author NélixA against actions committed by his officials, in the event that these actions infringe on the provisions laid down by the present conditions and by the applicable law.

#### Article 6 - RESPONSIBILITY.

Given the current knowledge concerning the product, and although the product has been carefully tested before its installation, it is not possible to affirm that all parts of the system will function unceasingly or that the product will be exempt from bugs in all the use combinations chosen by the user.

Thus, the client accepts the product knowing the above facts and renounces to take any action against NélixA concerning damage afflicted to himself, his employees or to a third person.



Usefull for  
Internet  
User or  
Network  
Administrator.

# Why

*MP Commander ? The Pocket is a powerfull «palm» ISDN/Ethernet Router for Intranet or Internet.. We chose it 26 months ago because we move frequently and we develop this app to manage some features changing from place to place or during the*

*day. The login and Telnet commands are pre-recorded «under» button or list... One of the smallest interfaces weighs only 120 \* 25 pixels ! After one year of testing by Nelixa, we decide to make the software available to you ! for both MacOS and Win32 (Win9x and NT4) platforms.*

Internet's users, when using a router with an ISDN line, want to automatically control (or not) routing, choose the number of channels, or define the closing time... The very small size of the router is a great advantage for notebook computer users. Without being a technician, it is possible to «administrate» the routeur. It is also possible to temporaly open the firewall (SecureWall™) to read QuickTime TV or using video-conferencing (Cu-SeeMe). The installation is very easy. Only one folder and few files inside on the disk.

Network's administrators, with routers used both for Internet and LAN to LAN or SOHO to LAN routing can use the full (commercial) version of MP Commander. To do that, an administrator (who has all the documentation of the routeur) use a telnet console ! Diagnosis, Macros, Applescriptable (only on MacOS version) are the main features of the full version 1.7x. Diagnosis menu item send a list of commands to the router and fill a diagnostic.txt file with the result. Macros are used if the router manage more than one LAN to LAN site and LAN to WAN routing connexion. With one macro, you can send a series of commands. (example : select a site and change some features).

Draft

## MacOs (PPC) Version versus Win 32bits (PC) Version

MP\_commander is developed with the same tool (RealBasic) and is compiled in two versions with the same source.

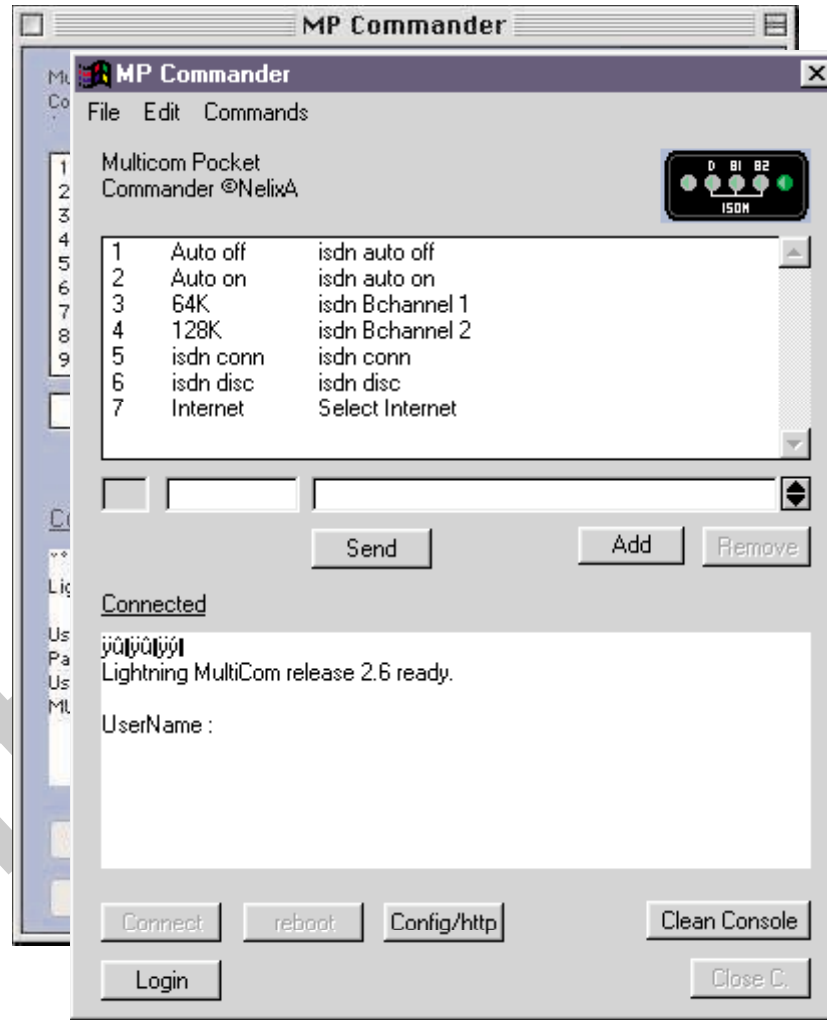
If some features are only available in PC version, the following logo is used.



If some features are only available in MacOs version, the following logo is used.



For both versions, all the files are in one folder, no prefs files outside, no dll, no ocx in PC version... (see page 12).



The “lite” version manages only the “WAN” Internet routing.



It is very useful for the administrator of a small LAN with access to WAN.

If you are not registered go to page 3 - only the Lite version is available.

Registered users can choose Lite or Full use of MP Commander.

Version 2K019

## Installation (Lite Version) :

After decompressing the file, you end up with a folder. Drag it where you want, everything necessary is inside.

Launch the application (MPComman.exe or MPCommander\_xxx).

### The main window or LITE version:

#### The first time you launch:

**Only use it after filling Preferences windows and restart MP Commander.**

On subsequent uses click one of the six buttons to modify INTERNET state of the MP router (not the config file).

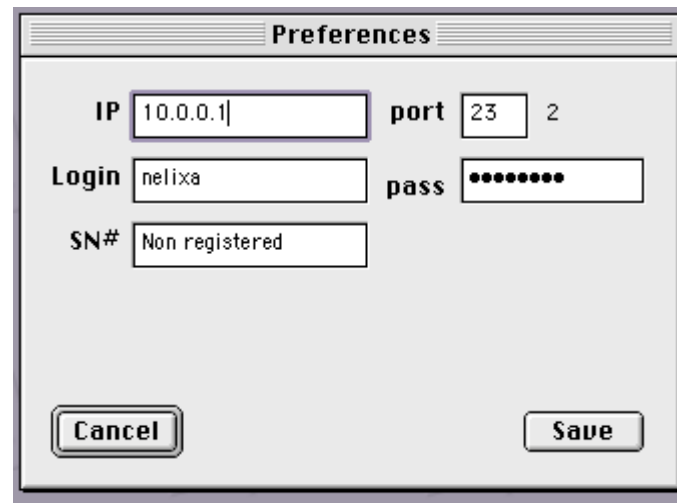
- Auto On : Authorize automatic connection from LAN to WAN
- Auto Off : Disable automatic connection from LAN to WAN
- Connect : Manually open the connection from LAN to WAN.
- Disconn : Manually close the connection from LAN to WAN.
- 64k
- or 128k to set 1 or 2 ISDN Channel.

## Why register?

It is a beta version, so you will be informed or receive E-Mail support: Use the register button in the Preferences Windows (open the navigator to the URL page, fill in the form to fill or just send an E-mail to [contact@nelixa.com](mailto:contact@nelixa.com) with the subject as "Register MP Commander". With the registration, you have all the features of MP\_Commander described in this documentation.



## The preferences window :



Fill the different fields (IP, your Login and Pass of the MP router)

#### CAUTION

Don't forget to restart after saving Preferences in Lite version.



# Preferences...

Preferences :

This window is used to configure MP Commander to control the Multicom Pocket.

IP : IP of the Multicom Pocket  
Login and pass to log the Pocket.

Fill the SN# with the register number.  
(lite version only without).

When Mode DHCP is checked, the main window is enriched by special buttons to manage adaptation of DHCP and Translation (not used in standard configuration).



Choose the application where the mini floating window will be in front of.

(Finder, or Netscape or all...) (see page 7)

The Mac OS style Preferences dialog box contains the following fields and options:

- IP: 192.168.66.1
- port: 23
- Login: nelixa
- pass: [masked]
- SN#: [empty]
- Lite:  Led:
- Frontmost app: MACS (Finde...)
- Start Float Win:
- Mode DHCP Control (Cu SeeMe):
- Auto Login:  Auto Conn:
- Buttons: Cancel, Register, Save

Check «**Lite**», if you only need the six commands for Internet Routing. Check «**Led**» to authorize a background task displaying the state of the B Channels. (Only on MacOs). Check «**Start FloaWindow**» to launch the application directly to the small floating window. **AutoLogin** opens the main console and the log session is automatically done. **Auto Conn** open the IP connection. If MPC is not registered, the **button register** opens the default navigator to the URL of the Nelixa's form to register and obtain the SN#.

Save the current preferences...

The Win32 style Preferences dialog box contains the following fields and options:

- IP: 192.168.65.1
- port: 23 13
- Login: nelixa
- pass: [empty]
- SN#: [empty]
- Lite:  Led:
- Auto Login:
- Buttons: Cancel, Save



On Win32 PC latest version, the floating window is always visible if activated. It is not possible to choose the main app where MP Commander will be visible.

Draft



An easy Telnet console...

MP\_Commander' console :

List of the commands (the basic 6 commands are created when starting without Prefs files : Here example of use in NélixA.)

When the connection is open, one click will activate the command. (in the latest version, the login is automatically done).



The list of commands is saved automatically in Prefs file.



In the PC version, you need to open Preferences and save to keep the list.

Fields where to write (or add) command: Put in the second column the word which appear in the floating window.

Button "Send" (or Return Key) to send command edited in the field above.

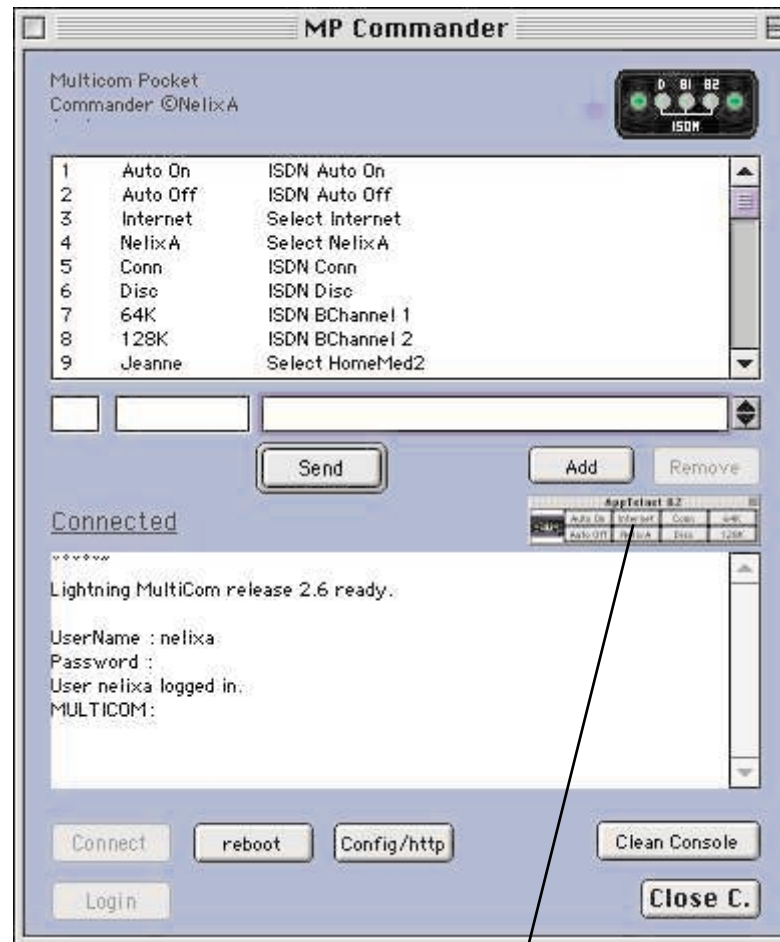
Field with the texts sent by Pocket Router

Buttons :

Connect : to open the session with Pocket.

Login : to send the log and pass (see Preferences window)

Reboot : to reboot the Pocket



The spin button to order the list of commands. Use it (when the connection is closed) to choose the first eight commands visible in the small floating window.

To remove a command in the list, the connection must be closed.

Colored button to active the small floating window : (see below) (only possible if login is ok).

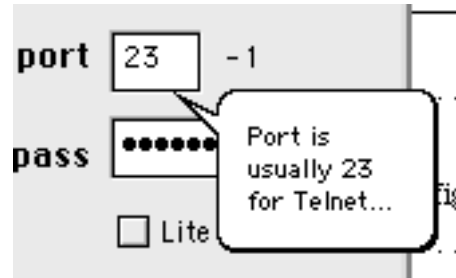
«Config http» open the navigator to the IP adress of the router.

Clean the console of texts sent by the Multicom Router.

Close : to close the comm with Pocket.



Main items are enriched with comments if you activate Balloon Help..



Only in the registered version...

To activate the background task which periodically (every two seconds) test the state.

Click the right lower quarter of the black rectangle. The yellow led on the left of the rectangle is blinking.

The current time is written here.

To stop the testing, click the left lower quarter of the black rectangle.

To activate this task, the Led option must be pre-checked in the Prefs window before.

Caution : this task is time process consuming.

### Graphic State of the Router.

The black rectangle simulates the front of the Pocket Router.

When the IP connection is open the led on the right is green. If login is correct (username and password), the first led on the left is green.

This picture is also visible in the Lite version.

The other led (B1 and B2) are managed by the option described in the other column of the page.

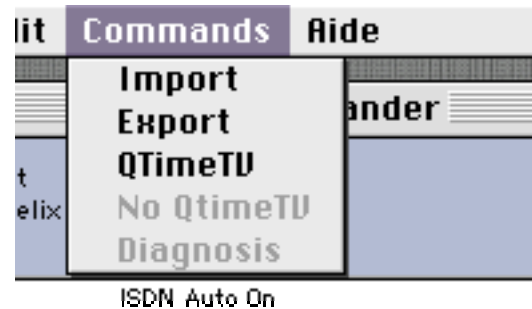
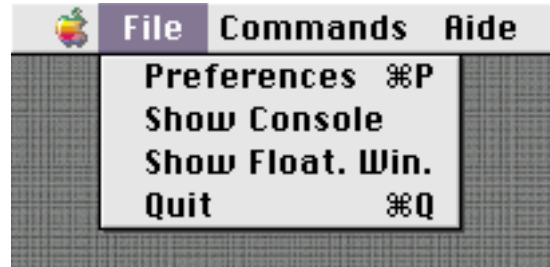


The “file“ menu :

**Preferences** open the window to configure MPCommander.

**Show Console** display the main window when the Floating window is active.

**Show Float. Win.** shows the mini window (equivalent to the icon button under Add button).



In “**commands**” menu you can **import** or **export** commands from the “Commands\_Telnet” text file (SimpleText) - (CommTnet.txt for PC). Please refer to the manual of pocket Multicom (included in the CD) which describes more than one hundred commands.

**QtimeTV** is to open port to use Quicktime TV through the Pocket Firewall.

**Diagnosis** is reserved for the commercial version.

Draft

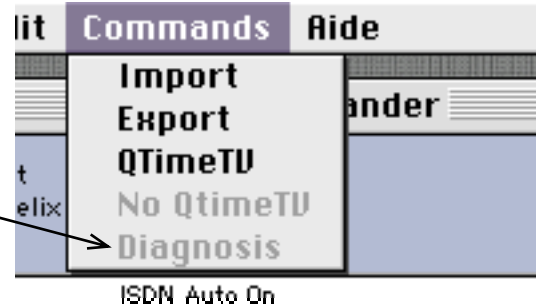
Accessible through the command menu, this feature is used to create a text file that can be send to the administrator or the provider.

This option is only available in the commercial version of MP Commander.

Files requirements :

«CmdsFile» is a text file including the commands needed to do the diagnosis. This file is in the same folder as the executable application.

The result of the diagnosis is written in another file entitled «Diagnosis.txt».



Extraction of one diagnosis.txt file:

```
----- start -----
mardi 7 septembre 1999 14:41:40
Conn Open
Log Ok
----- Telnet return -----
*****
Info Version
```

Software Release 2.6

```
ISDN Layer2 : version 2.0
ISDN Layer3 : version 2.0
ISAC Driver : version 2.0
```

Serial number = LI-MU3-CH-5603

Software Options

```
-----
IP Router  : INSTALLED
IPX Router : NOT INSTALLED
Bridge    : NOT INSTALLED
Serial Line : NOT INSTALLED
```

Draft

Reserved for the administrator of a site :

Only available now on the MacOs version :

Graphic State of the B Channels.

(see page 8)

Command Tips and Tricks :

Normally, when a command is sent (button «Send» or by clicking on an item in the list), MPC checks if the connection is open and login ok. But sometimes, according to you, by preceding with the char «§», the telnet is send directly.

Macros:

With this option soon available, it will be possible to group some commands under only one line in the MPCCommander console.

1	M Net On	#Internet_on
2	M Net Off	#Internet_off
3	64K	isdn Bchannel 1
4	128K	isdn Bchannel 2
5	isdn conn	isdn conn

The macros must be written in the «macrofile» file with a text editor (Simple Text on Mac or NotePad on PC). It is necessary to use the commands described in the references of the Multicom

Title Name

Commander				
MP	M Net On	64K	isdn conn	Ternay
Commander	M Net Off	128K	isdn disc	M_330

Pocket Manual. Each macro begins with a name preceded by «#» and followed by a sub-list of telnet commands. This name must be added in the MPC list and when the macro is selected, MPC check MacrosFile and execute the sub-list.

On the MPC interface, it is better to add a title to the macros. This title will be displayed in the floating window if the macro is in the first eight positions of the list.

Tip : This file can be edited when it is necessary, it is only read when a macro is sent.

Example of MacrosFile (MacrosFile.txt) and the list of Macros:

```
#Internet_on
select internet
ISDN Auto On
#M_330
Select Internet
ISDN IdleCloseTime 330
#M_90
Select Internet
ISDN IdleCloseTime 90
#Internet_off
select internet
ISDN Auto off
```

sub-list = content

Draft

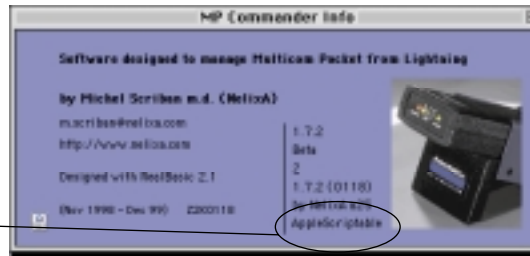


Applescript features add powerfull capacities to MP Commander...

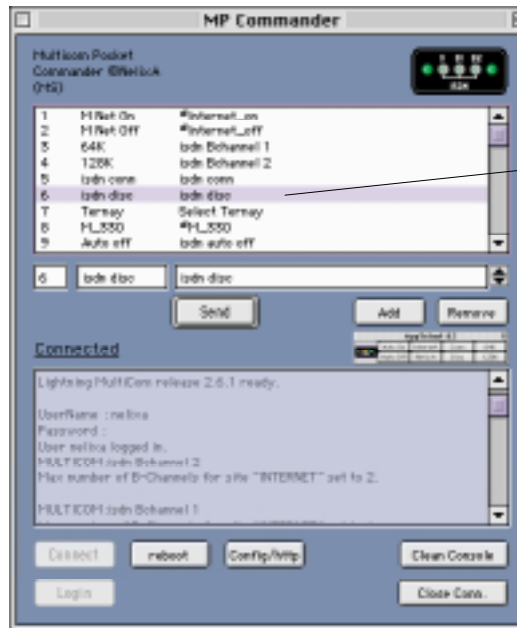
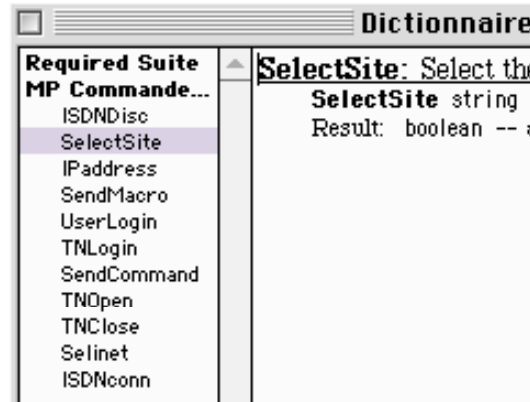
Before using...

Verify

- that the release is applescriptable (by opening info windows).
- that Applescript Extensions is correctly installed on the Mac...
- that Script Editor is available in Apple Extras Folder.



**Why?** Applescript permit to an application to control another application (and read feedback). By adding power to the macros, you can create your own interface which is sending event to MP Commander. Or you can use the finder folder's scripts to manage the router when a file is put inside the folder ! What tools are necessary ? Only the script editor and the documentation. 11 commands are added to the required suite present in all scriptable application (open, quit...). The details are on the next page.



Recordable :

Today (Jan 2000) few functions (but the most important) are applescript-recordable. When you click in the list and when you click the close connection button. It can be an easy way to make macros or to add line in small applescripts.

Draft

## Dictionary of Applescript commands :

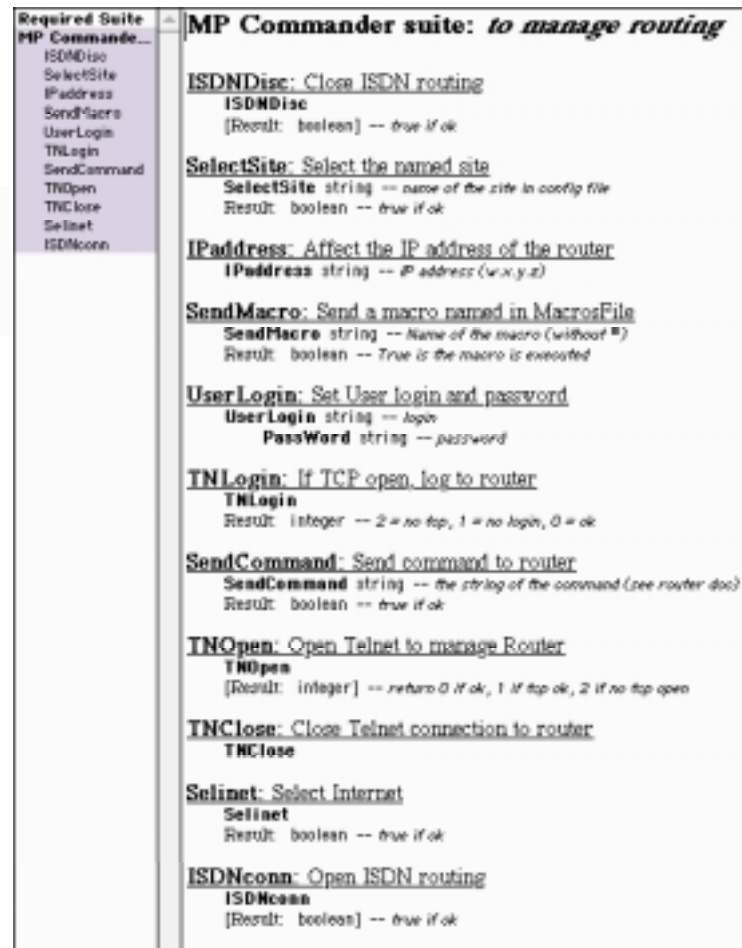
The dictionary is accessible through the Script Editor.

On the left column is the list of the MP Commander. On the right, commands are detailed.

### Example of a script

```
-----
tell application «MPC_Aqua_25_0118_AS»
    activate
    SendMacro «Internet_on»
    SendCommand «isdn Bchannel 2»
end tell
quit
-----
```

When the script is saved as an application, by clicking on the Icon, the commands are executed.

**MP Commander suite: to manage routing**

**ISDNdisc: Close ISDN routing**  
**ISDNdisc**  
 [Result: boolean] -- true if ok

**SelectSite: Select the named site**  
**SelectSite** string -- name of the site in config file  
 Result: boolean -- true if ok

**IPaddress: Affect the IP address of the router**  
**IPaddress** string -- IP address (w.x.y.z)

**SendMacro: Send a macro named in MacrosFile**  
**SendMacro** string -- Name of the macro (without #)  
 Result: boolean -- True is the macro is executed

**UserLogin: Set User login and password**  
**UserLogin** string -- login  
**PassWord** string -- password

**TNLogin: If TCP open, log to router**  
**TNLogin**  
 Result: integer -- 2 = no tcp, 1 = no login, 0 = ok

**SendCommand: Send command to router**  
**SendCommand** string -- the string of the command (see router doc)  
 Result: boolean -- true if ok

**TNOpen: Open Telnet to manage Router**  
**TNOpen**  
 [Result: integer] -- return 0 if ok, 1 if tcp ok, 2 if no tcp open

**TNClose: Close Telnet connection to router**  
**TNClose**

**Selinet: Select Internet**  
**Selinet**  
 Result: boolean -- true if ok

**ISDNconn: Open ISDN routing**  
**ISDNconn**  
 [Result: boolean] -- true if ok

### The Applescript's command of MP Commander are classified in three categories:

Generic commands : «SendCommand» and «SendMacro»,

Connection commands : «TNOpen», «TNClose», «TNLogin», «IPaddress» and «UserLogin».

Compact commands : «ISDNconn», «ISDNdisc», «SelectSite» and «Selinet».

To use Generic commands, you must use the reference manual to know what telnet's command to use. As described in the dictionary, the label of the SendMacro must not preceded by «#» like in the list. Connection commands work like buttons or fields of MPcommander main window or preferences window. «TNOpen» work like both Connect and Login Buttons, It try to open Telnet and log to the router. The result indicate what is ok. Compact commands are equivalent to current command used. «ISDNconn» is the same as «SendCommand "ISDN conn"», «ISDNdisc» is the same as «SendCommand "ISDN disc"», «SelectSite "Nelixa"» is the same as «SendCommand "Select Site Nelixa"», «Selinet» is the same as «SendCommand "Select INTERNET"»....

Draft



## QuickTime and Cu-SeeMe...

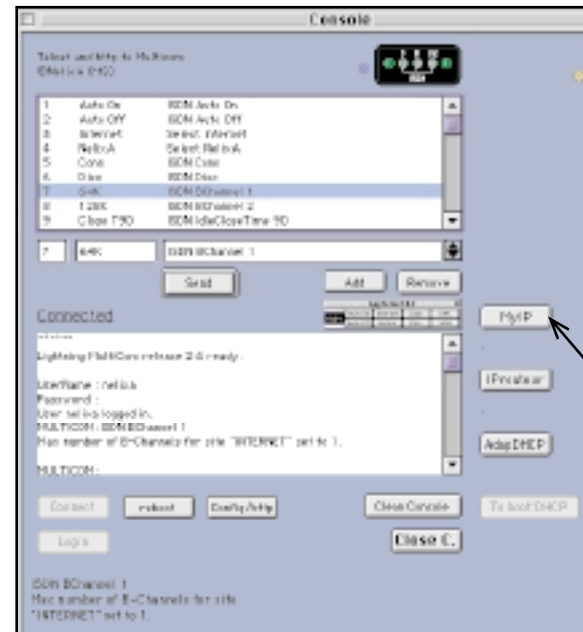
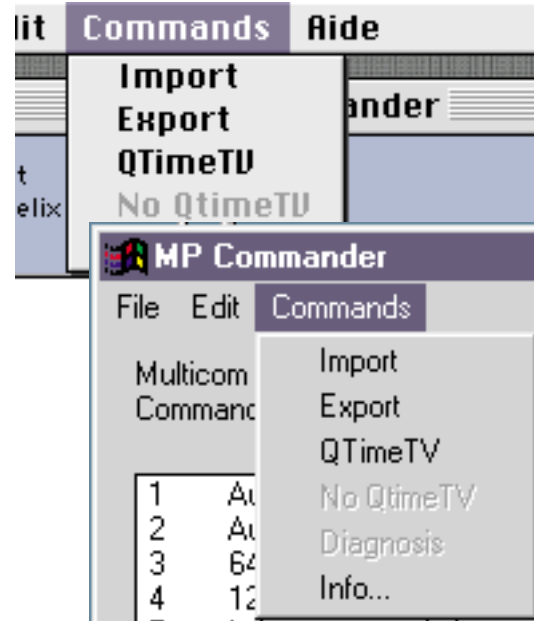
MP\_Commander can configure the Pocket to enable Quicktime TV.

Because only one PC on the LAN can use Quicktime TV, MP\_commander detect which PC who have specific port translation.

If it is free, it affects IP Translation for the computer where MP\_Commander is installed. The config file of the router is not changed.

The Item menu "No qtimeTV" free the IP Translation of the former computer.

Diagnosis is a feature reserved for the commercial release. It allows some diagnosis, and fills a file that can be sent by E-mail to technical support.



MP\_Commander' console for DHCP configuration :

This screen is used to adapt DHCP when Multicom Pocket is used with one Mac and with Cu-SeeMe.

The procedure will be updated in next future with NAT and PAT of 2.5 release of Multi-comm Pocket.

The IP of the Mac

The Routing IP delivered by the ISP

Launch the routine to adapt translation and dhcp (after you must launch again the TCP config of the Mac to adapt the IP of the Mac

Version 2K019

Draft

Tips and Tricks:



Mini floating window (main commands in small space) :

The commands (the first 8 of the list) are active only if login is ok.



If you click on the colored button, you make the main console visible.

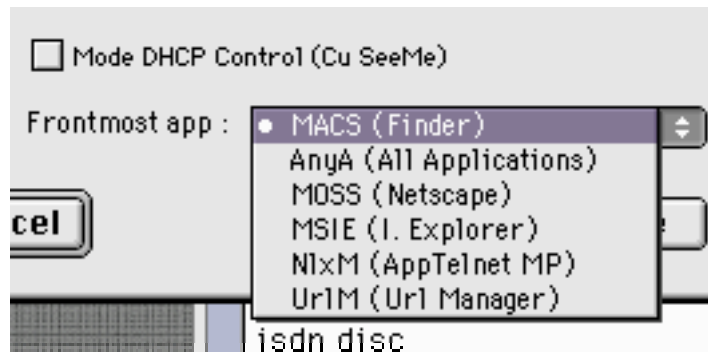
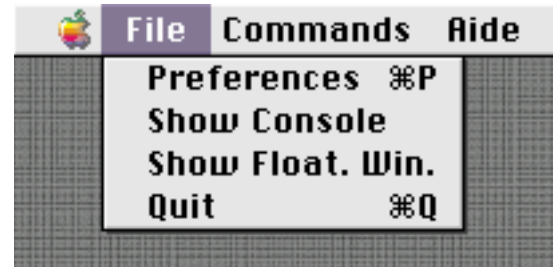
Bchannel (1 or 2) is useful to control speed during downloading big files...



In the latest release (available in Nov 99) for PC compilation, the Floating Window is active in front but for all applications.

Preferences window :

The list of the application where you choose where floating window will appear is defined by the popup menu saved in the preferences file. Each application has it's MacCreator (four characters code) and it's name. Only AnyA is a non official code for all applications. If you want to control MP routeur whilst using navigator, choose Netscape or IE.



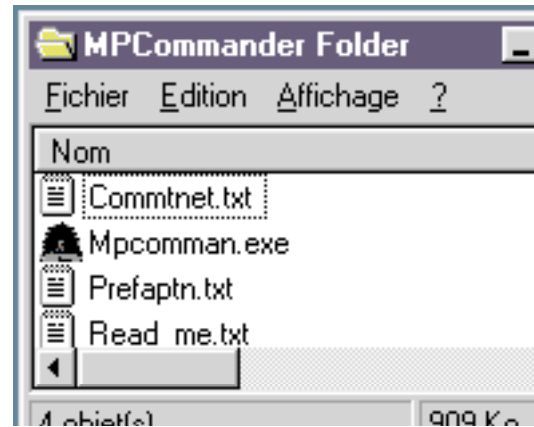
Draft

## The Folder and the files :

### In the Lite or normal use...

Only the 2 files in the folder are necessary, no files in other folder of your PC.

Application file, Preferences file  
(Prefs\_MPcommander or Prefaptn.txt)



### The other files :

All these files are editable with Simple Text (or Notepad).

Commands\_Telnet or CommTnet.txt must be present before Import action of series of telnet commands.

Cmdsfile.txt, MacrosFile.txt,Diagnosis.txt... are reserved for commercial use of MPCommander.



Draft

## History :

01/2000 : Minors updates, New Docs.  
 12/1999 : Diagnosis and Macros for commercial version, optimization of sources.  
 12/1999 : AppleScriptable (and recordable).  
 11/1999 : In PC Win 32 compilation, more features like in MacOS.  
 6/10/1999 : AppTN4MP renamed in MP Commander.  
 9/9/1999 : Open Port for QuickTime TV.  
 22-Aou-99: Automatic login and Balloon Doc..  
 14-Jul-99: release to manage CONFIG through http..  
 18-apr-99 1.3.1: Double list of command (name and content of the command).  
 08-feb-99 1.2.8: Mini Floating window, frontmost app for this window, new menu item...  
 03-feb-99 1.16: List of commands saved in preferences.  
 02-feb-99 1.06: Password crypted.  
 31-jan-99 1.03: Preference file and option button for DHCP.  
 08-nov-98 1.01: Release including detection of IP and series of commands to use Pocket with Cu-SeeMe.  
 24-oct-98 0.99: First version to send command to Pocket.

### Tested on :

Powerbook G3, Imac, PM7500 (MacOS 7.6.1, 8.5, 8.6, 9)  
 Win 98, NT4, Win 95 (Virtual PC).

### Other utilities:

AppTelnet4TD : to manage Mac via Telnet with Tool-Daemon from Douwere.

Popclean : to manage and clean Pop Mail account via Telnet.

EuroTable : to convert Euro and Currency.

## About :

### Authors :

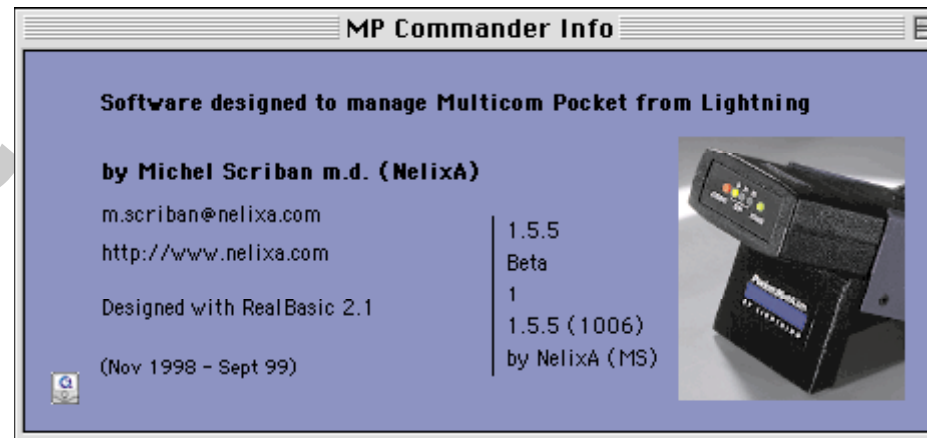
Michel Scriban with the skilled help of  
 Frédéric Blondiau (Douwere)  
 Lightning's Technical staff

The Multicom Pocket from Lightning (Ch) :  
 One of the smallest ISDN/Ethernet routers :  
[www.lightning.ch](http://www.lightning.ch)

## Registerware :

registration by completing the form on  
 «[http://www.nelixa.com/registerware/ Registering\\_MPC.htm](http://www.nelixa.com/registerware/Registering_MPC.htm)»

or by sending E-mail to  
[contact@nelixa.com](mailto:contact@nelixa.com)



Draft

