

MPCCommander

version 3.1 for Mac OS X

Shipped 2002, February 25th

Since 1998, MPCCommander is compiled for Mac OS Classic and Windows PC. In 2000, version for Mac OSX is built. With the version 3.1, a special built is shipped for Mac OS 10.1.x including all available interfaces tools :

- Application menu's items,
- Dock features named "dock application menu",

Some new functions are added to MPCCommander which become progressively a real "MultiPurpose Commander". Initially made for MultiCom Router from Lightning, MPCCommander can also work with your OS (with shell function...).

Registration :

MPCCommander 3 is not (as previous version) a freeware distributed with MultiCom Router. It is a SHAREWARE.

The NON-REGISTERED application is LIMITED until 3/3/2002. A message is displayed when quitting.

<http://www.mpcommander.com/>
or
<http://www.nelixa.com/registerware/mpcommander/>

Dock application menu :

In Mac OS Classic, you can choose with which application, the floating window will be in the foreground. In Aqua interface of Mac OS X, it is not possible but replaced by the powerful Dock.

The dock menu contain some item like in screen menu but also the first twelve commands of the list shown in the main window (console).

The names of the command are chosen by you (left column).

To hide the main window and only show the dock, click the icon with the blue helmet of MPCCommander on right on the icon representing the floating window (Fig.1).

Dock and Preferences : by clicking "Only dock" checkmark, in the preferences window (Fig. 2), when MPCCommander is launched to start with floatwindow, you will see only the black triangle under the icon in dock but by clicking the right button of the mouse, the dock menu appear (Fig. 3).

Tips and tricks :

When you choose the first twelve commands, choose useful commands (telnet commands or macros) (i.e. to open and close Internet connection, to close telnet connection with the router, to choose how many B channels are usable...)

Fig. 1



Fig. 2



Fig. 3



How to register ?, How to enter registration number ?:

To obtain the registration number, you need to the MPCommander X page. Your E-Mail must be valid.

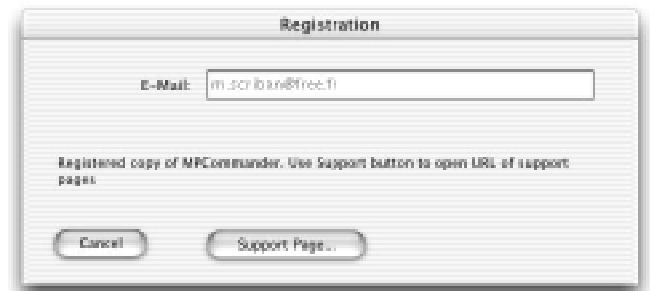
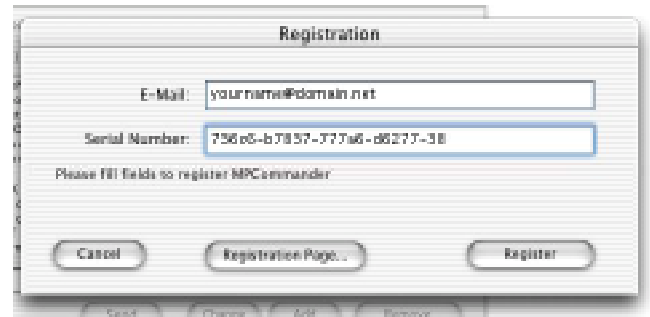
<http://www.nelixa.com/registerware/mpcommander/>

To paid the shareware, most of the credit card are usable. For special demands (quantity,...), please email to contact@nelixa.com.

When you receive the serial number, copy it from the body of the e-mail and paste it in the field of the registration window.

After filling the E-Mail field, click the register button.

When the software is registered, the registration window is used to open support pages of MPCommander. The "Support Page..." button has replaced the previous "Registration Page...".



What's new in version 3 ?

MPCCommander benefits from improvements of RealBasic 3.5 and from other developments.

Versions will progressively available for MacClassic, **MacOSX**, Win32 (Win9x, Win2K). (see www.mpcommander.com)

- [New] : Special command "\$now2router" set date and time of the PC to the router.
- [New] : Special command "\$updatesitelist" fill the list with "select site xxxx". xxxx are the sites defined in the config of the router attached.
- [New] : Special command "\$reboot" can be included in macro.
- [New] : A small popup right of the editfield where commands can be edited contain history of the latest used. (no saved).
- [Imp] : Buttons of floating small window have the same aspect on Mac or PC.
- [Imp] : Positions and sizes of windows are saved.
- [Imp] : Field where text coming from router is displayed can be used as a console.
- [Imp] : Telnet sessions benefit from IP socket improvements. If preferences are correctly set, the session start automatically after sending (clicking) a command (from the list, or in floating window).
- [New] : The format of Preferences file named now "MPCCommander_Prefs" is the same for all OS (no ressources).

Installation :

New user : Read the full documentation and this one, it is easy : after decompressing, place the folder where you want.

User of previous version : Make a copy of your previous version folder. Place the application of the decompressed folder, in your previous folder and launch. All your previous preferences are preserved in a new preferences file named "MPCCommander_Prefs". The old preferences file is moved to a folder named "Old_Prefs_f".

Credits :

Source made with RealBasic 3.5.x include plugs-in :

- Carbon Events Plug-in 1.3 from Will CosGrove,
- MMisc Plug-in from Chad McQuinn.